

PT series

industrial ultrafiltration elements – PES 5,000 MWCO

The PT family of polyethersulfone ultrafiltration membrane elements is characterized by a 5,000-molecular weight cut-off.

Table 1: Element Specification

Membrane	P-Series, Polyethersulfone
----------	----------------------------

Model	Spacer mil (mm)	Active area ft ² (m ²)	Outer wrap	Part number
PT8040C50	50 (1.27)	264 (24.5)	Cage	1240574
PT8040F30	30 (0.76)	340 (31.6)	Fiberglass	1229772

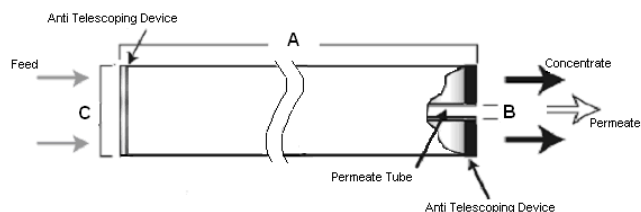


Figure 1 : Element Dimensions Diagram (Female)

Table 2: Dimensions and Weight

Model ¹	Dimensions, inches (cm)			Boxed Weight lbs (kg)
	A	B ²	C ³	
PT8040	40.0 (101.6)	1.125 (2.86)	7.9 (20.1)	29 (13.2)

¹These elements are bagged dry before shipping.
²Internal diameters unless specified OD (outside diameter).
³The element diameter (dimension C) is designed for optimum performance in GE Water & Process Technologies pressure vessels. Other pressure vessel dimension and tolerance may result in excessive bypass and loss of capacity.

Table 3: Operating and CIP parameters

Typical Operating Flux	5 – 20 GFD (8 – 34 LMH)	
Maximum Operating Pressure	200psi (1,379kPa)	
Maximum Temperature	Continuous Operation: 122°F (50°C) Clean-In-Place (CIP): 122°C (50°C)	
pH range	Continuous Operation: 2.0-10.0, Clean-In-Place (CIP): 1.0-11.5	
Maximum Drop Pressure	Over an element: 15psi (103kPa) Per housing: 60psi (414kPa)	
Chlorine Tolerance	5,000 ppm days	

Find a contact near you by visiting www.suezwatertechnologies.com and clicking on "Contact Us".

*Trademark of SUEZ; may be registered in one or more countries.

©2017 SUEZ. All rights reserved.